



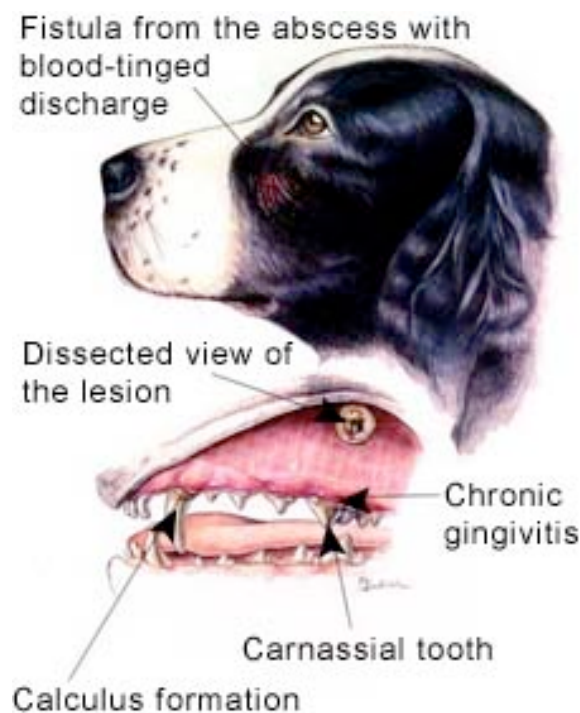
CAYMAN ANIMAL HOSPITAL

Carnassial Tooth Abscess

Cats and dogs have four types of teeth: incisors, canines, premolars and molars. Each type of tooth has a particular function. The incisors are used for nibbling and grooming. The canine teeth (the large fangs) are for tearing food and biting (protection or hunting). The premolar and molar teeth are used for grasping, shearing and grinding food.

In cats and dogs, two carnassial teeth are located in the upper jaw and two are located in the lower jaw. These teeth are the largest in the mouth and are particularly useful for grinding and shearing food.

Occasionally the root of a carnassial tooth becomes infected. When this occurs, the tooth must be repaired or extracted. Extraction of the tooth is the most common procedure.



Carnassial Tooth Abscess

Upper carnassial teeth are most commonly affected. The most common symptom of an upper carnassial tooth abscess is a small abscess or fistula occurring under the corner of the affected eye. X-rays are sometimes required for diagnosing a carnassial tooth abscess.

Modern veterinary medicine ... Old fashioned care